



V2

Precautions for Use



1. Do not use the pulse oximeter in an MRI or CT Scan environment.
2. Explosion hazard: Do not use the pulse oximeter in an explosive atmosphere.
3. The pulse oximeter is intended only as an adjunct in patient assessment. It must be used in conjunction with other methods of assessing clinical signs and symptoms.
4. Check the pulse oximeter sensor application site frequently to determine the positioning of the sensor and circulation and skin sensitivity of the patient.
5. Do not stretch the adhesive tape while applying the pulse oximeter sensor. This may cause inaccurate readings or skin blisters.
6. Before use, carefully read the manual.
7. The pulse oximeter has no SpO2 alarms; it is not for continuous monitoring, as indicated by the symbol.
8. You may need to change the sensor site periodically, especially if you're using it for a prolonged period of time. Do not leave the sensor on in the same place for over 4 hours.

Inaccurate measurements may be caused by:

9. Nail polish or acrylic fingernails
10. Excessive movement
11. High ambient light/direct sunlight
12. Usage of a blood pressure cuff, arterial catheter, or intravascular line
13. The patient being in cardiac arrest or in shock
14. The patient having hypotension severe vasoconstriction, severe anemia, or hypothermia
15. Venous pulsations
16. Significant levels of dysfunctional hemoglobins (such as carboxyhemoglobin or methemoglobin)
17. Intravascular dyes such as indocyanine green or methylene blue
18. Autoclaving, ethylene oxide sterilizing, or immersing the sensor in liquid
19. Do not modify or open device.
20. Do not wash or clean with any harsh chemicals.
21. Use fresh battery only.

General Description

The Blaux Pulse Oximeter (the Device) features accurate SpO2 and heart rate reading in a compact, portable, energy-efficient, and lightweight package. The oximeter uses photoelectric sensors for fast diagnosis and accurate, dependable readings in a non-intrusive, convenient manner.

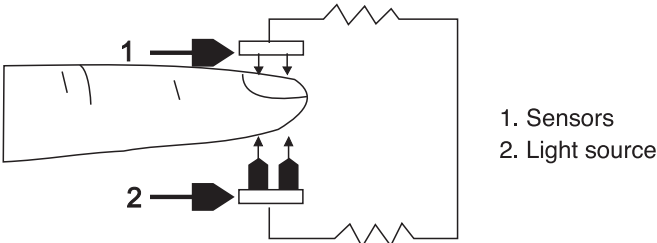
Oxygen saturation is the percentage of oxyhemoglobin (HbO2) capacity, compounded with oxygen in the blood. This is vital to gather information to diagnose respiratory and circulatory problems.

Please follow all medical advice from your physician. This oximeter is not meant to replace seeing your doctor or seeking clinical help.

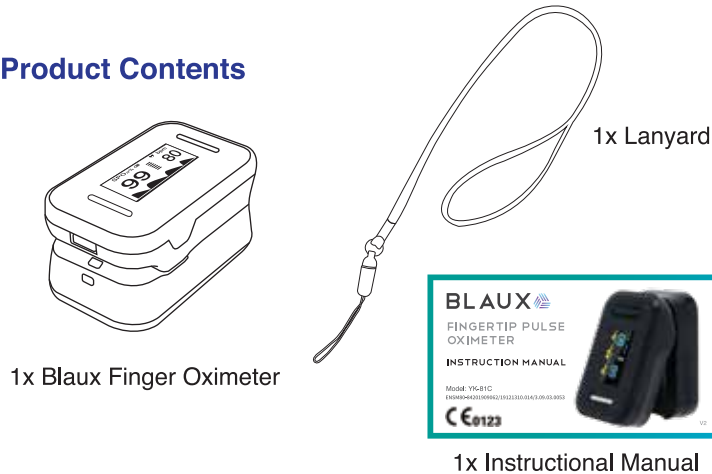
How the Blaux Oximeter Works

Using the mathematical principles in the Beer-Lambert Law, the Blaux Oximeter works to find the absorption characteristics of hemoglobin and oxyhemoglobin (HbO2). It uses a harmless light and a set if sensors in order to collect the aforementioned data. Once calculated, it appears quickly on the display.

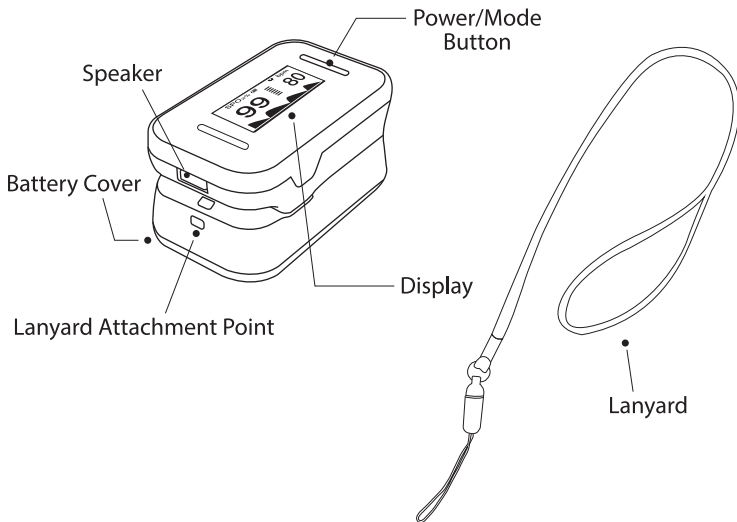
Diagram of Operation Principle



Product Contents



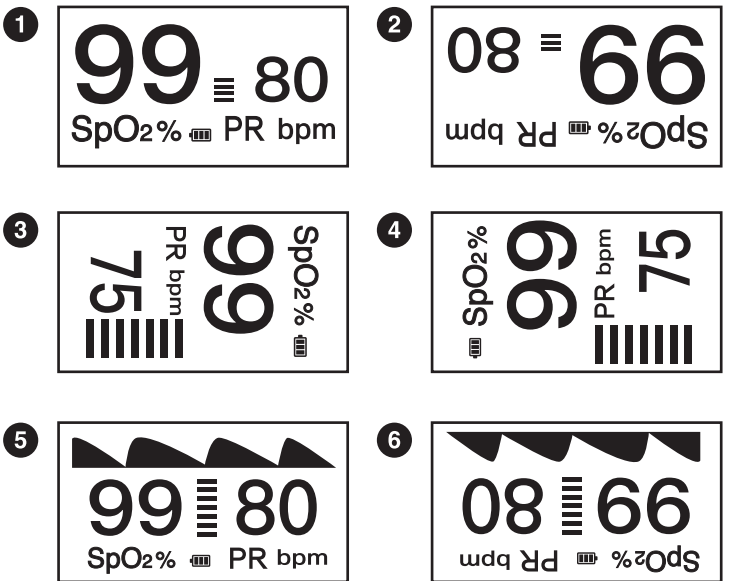
Parts Description



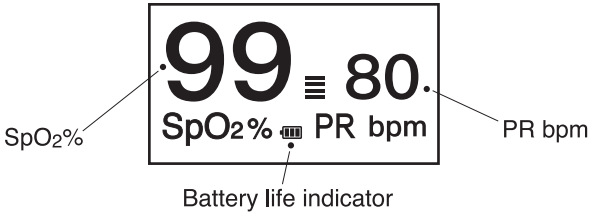
Operation Instructions

1. Remove the sliding battery cover.
2. Install 2 AAA battery (Not included) in the proper direction of polarity.
3. Close sliding battery cover.
4. Insert your finger into the opening and make sure it's all the way to the end to ensure an accurate reading. Remain still while testing.
5. Press the power button to turn on your Blaux Oximeter. The reading will be automatically displayed in a few seconds.
6. Your Blaux Oximeter will automatically shut down when your finger is removed from it.
7. We recommend removing the battery if you do not plan on using your oximeter for an extended period of time.

Display Information



You can cycle between different display setting (Style 1 to 6) by pressing the Mode button while the Device actively taking measurement (with finger inserted).



Adjusting the Settings

- Your Blaux Oximeter is equipped with a variety of settings that you can easily access by holding the button for 3 seconds.
- To scroll down, press the button and the indicator on the right will move to the next item.
 - To select, press and hold the button for 3 seconds.
 - To perform a factory reset, scroll down to "Restore", then press and hold the button for 3 seconds.
 - The Brightness options has 4 levels of brightness to suit your liking. Hold the button until you get to your desired brightness.
 - Once you're done, scroll to "Exit", then press and hold the button. You will be returned to the main screen.

Indications for Use

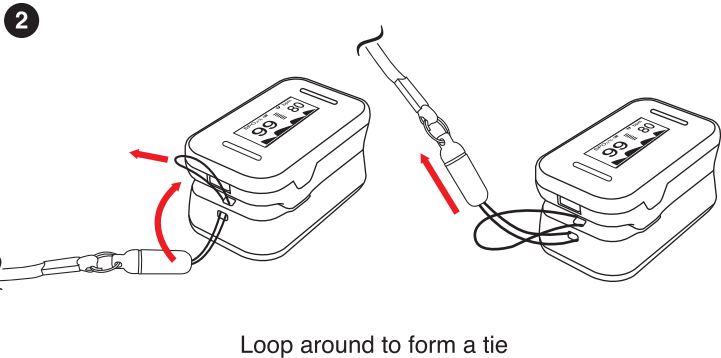
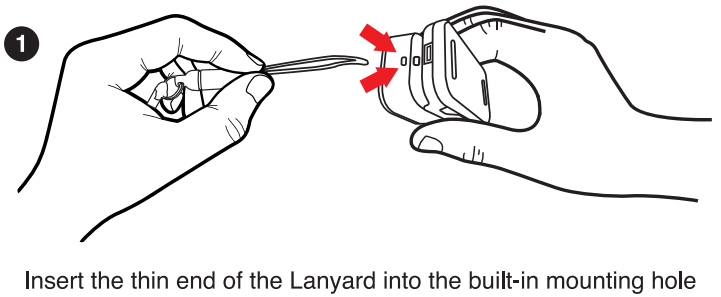
The pulse oximeter is designed for spot checking of the pulse oxygen saturation and pulse rate for adult and pediatric in clinic environment. This medical device can be reused. Not for continuously monitoring.

Setting Menu

| |
|--|
| ALM Set up <ul style="list-style-type: none">• Select "Sounds Setup" to return to the main settings menu |
| <ul style="list-style-type: none">• SpO2 ALM High<ul style="list-style-type: none">◦ Press and hold to change the value in which the device will beep if you have a high SpO2 value. |
| <ul style="list-style-type: none">• SpO2 ALM Low<ul style="list-style-type: none">◦ Press and hold to change the value in which the device will beep if you have a low SpO2 value. |
| <ul style="list-style-type: none">• PR ALM High<ul style="list-style-type: none">◦ Press and hold to change the value in which the device will beep if you have a high heart rate. |
| <ul style="list-style-type: none">• PR ALM Low<ul style="list-style-type: none">◦ Press and hold to change the value in which the device will beep if you have a high heart rate. |
| <ul style="list-style-type: none">• +/-<ul style="list-style-type: none">◦ Press and hold to change whether the value is increased or decreased when changing any of the above settings. |

| |
|--|
| ALM Set up <ul style="list-style-type: none">• Toggles your alarms on or off |
| Beep <ul style="list-style-type: none">• Toggles the beep that corresponds with your heart rate |
| Demo <ul style="list-style-type: none">• Turns the demo mode on or off |
| Restore <ul style="list-style-type: none">• Performs a factory reset |
| Brightness (1, 2, 3, 4) <p>Adjust the brightness between the four brightness levels</p> |

Installing the Lanyard:



Product Specifications

1. Display Type: OLED display
2. SpO2: Measurement range: 70% - 100%
Accuracy: ± 3%
3. PR: Measurement range: 30BPM - 254 BPM
Accuracy: ± 2BPM
4. Power Supply: two AAA 1.5V alkaline batteries
5. Power Consumption: below 30mAh
6. Auto-Shutoff: The product automatically shuts off when no signal can be detected within 8 seconds.
7. Dimensions: Approx. 58mm x 35mm x 30mm
8. Operation Environment Temperature: 5°C - 40°C
Storage Temperature: -10°C - 40°C
Operation Humidity: 15% - 80%
Storage Humidity: 10% - 80%
Air Pressure: 80kPa - 106kPa
9. Declaration: The EMC of this product complies with IEC60601-1-2 standards.

Symbols and Definitions

| | | | | | |
|--|--------------------------|-------------|-------------------------------|--|---------------------|
| | BF type application part | IP22 | IP degree | | Serial number |
| | Separate collection | | Humidity range | | Date of manufacture |
| | Reference manual | | Keep dry | | Manufacturer |
| | Cautions | | Product certification | | Standby |
| | Lot number | | Temperature range | | Avoid sunlight |
| | Up toward | | European union representative | | |

Blaux Customer Service Information

Thank you for purchasing Blaux Fingertip Pulse Oximeter.

If you have any inquiries, please visit:
<https://support.blauxstore.com/>

Our customer support team is happy to help!



FCC Compliance

This device complies with Part 15 of the FCC Rules. Operation is subject to the following two conditions: (1) This device may not cause harmful interference, and (2) this device must accept any interference received, including interference that may cause undesired operation.

FDA Factory Information

Manufacturer : Xuzhou Yongkang Electronic Science Technology Co., Ltd
Manufacture Address: 4F C8 Building, No.40 Jingshan Road, Economic Development District, Xuzhou, Jiangsu, China

After sales address: 4F C8 Building, No.40 Jingshan Road, Economic Development District, Xuzhou, Jiangsu, China

Register: Xuzhou Yongkang Electronic Science Technology Co., Ltd
Residence: 4F C8 Building, No.40 Jingshan Road, Economic Development District, Xuzhou, Jiangsu, China

Date: see product label
Service Life: 5 years
Tel: 0516-66670805 87892766
Fax: 0516-87892766-606
Postal Code: 221004
Web site: www.yonker.cn

Xuzhou Yongkang Electronic Science Technology Co., Ltd
4F Building C8, 40 Jingshan Road, Economic and Technological Development Zone,
221000 Xuzhou, PEOPLE'S REPUBLIC OF China

Prolinx GmbH
Brehmstr.56, 40239, Duesseldorf
Germany

